

AibGenesis™ Mouse Anti-MOB3B Antibody (CBMOAB-51558FYA)

Cat. No.: CBMOAB-51558FYA

Specifications

Host species	Mouse (<i>Mus musculus</i>)
Clone	MO51558FYA
Specificity	This antibody binds to Rhesus MOB3B.
Format	Liquid or Lyophilized
Storage	Store at 4°C: short-term (1-2weeks) Store at -20°C: long-term and future use
Purity	> 90% was determined by SDS-PAGE
Purification	Purified with Protein A or G affinity chromatography

Application-Information

Application	WB, ELISA
Application Notes	ELISA: 1:1000-1:3000 Other applications are to be developed. The optimal dilution should be determined by the end user.

Target

Introduction	The protein encoded by this gene shares similarity with the yeast Mob1 protein. Yeast Mob1 binds Mps1p, a protein kinase essential for spindle pole body duplication and mitotic checkpoint regulation. This gene is located on the opposite strand as the interferon kappa precursor (IFNK) gene. (From NCBI)
Product Overview	Mouse Anti-Rhesus MOB3B Antibody is a mouse antibody against MOB3B. It can be used for MOB3B detection in Western Blot, Enzyme-Linked Immunosorbent Assay.
Protein Refseq	The length of the protein is 207 amino acids long. The sequence is show below: MSIALKQVFNKDKTFRPKRKFEPGTQRFELHKRAQASLNSGVLDLKAAVQLP SGEDQNDWV AVHVVDFFNRINLIYGTICEFCTERTCPVMSGGPKYEYRWQDDLKYYKPTALPAPQYMNL L

MDWIEVQINNEEIFPTCVGVPFPKNFLQICKKILCRLFRVVFVHVYIHHFDRVIVMGAEA HVNTCYKHFYFVT
EMNLIDRKELEPL.

Sub Cat	Clonalit	Species	Reactivi	Applicatio	Clone	Conjugate	Size
	y	ty	n				

MO-AB-15896	Monoclonal	Cattle (<i>Bos taurus</i>)	WB, ELISA	MO15896	Unconjugated; also available for Biotin; HRP; FITC and other labeled form.	100 µg
-------------	------------	------------------------------	-----------	---------	--	--------

Protein Refseq: The length of the protein is 216 amino acids long.

The sequence is show below: MSIALKQVFNKDKTFRPKRKFEPGTQRFELHKRAQASLNSGVDLKA AVQLPSGEDQNDWVAVHVVDFFNRINLIY
GTICEFCTERTCPVM SGGPKYEYRWQDDLKYKKPTALPAPQYMNLLMDWIEVQINNEEIFPTCVGVPFPKNFLQICKKILCRLFRVVFVHVYIHHFD
RVIVMGAEA HVNTCYKHFYFVTEMNLIDRKELEPLKEMTSRMCH.

MO-AB-27137	Monoclonal	Rat (<i>Rattus norvegicus</i>)	WB, ELISA	MO27137	Unconjugated; also available for Biotin; HRP; FITC and other labeled form.	100 µg
-------------	------------	----------------------------------	-----------	---------	--	--------

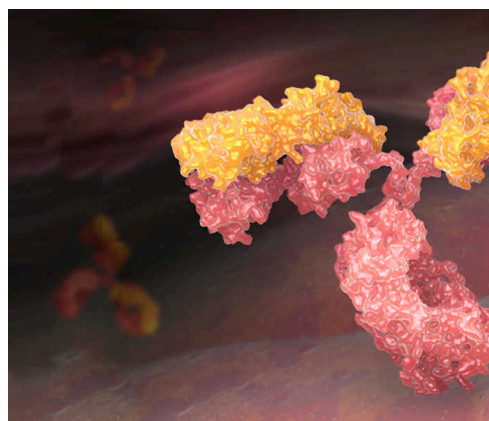
Protein Refseq: The length of the protein is 216 amino acids long.

The sequence is show below: MSIALKQVFNKDKTFRPKRKFEPGTQRFELHKRAQASLNSGVDLRAAVQLPSGEDQNDWVAVHVVDFFNRINLIY
GTICEFCTERTCPVM SGGPKYEYRWQDDLKYKKPTALPAPQYMNLLMDWIEVQINNEEIFPTCVGVPFPKNFLQICKKILCRLFRVVFVHVYIHHFD
RVIVMGAEA HVNTCYKHFYFVTEMNLIDRKELEPLKEMTTRMCH.

MO-AB-59209	Monoclonal	Marmoset	WB, ELISA	MO59209	Unconjugated; also available for Biotin; HRP; FITC and other labeled form.	100 µg
-------------	------------	----------	-----------	---------	--	--------

Protein Refseq: The length of the protein is 216 amino acids long.

The sequence is show below: MSIALKQVFNKDKTFRPKRKFEPGTQRFELHKRAQASLNSGVDLKA AVQLPSGEDQNDWVAVHVVDFFNRINLIY
GTICEFCTERTCPVM SGGPKYEYRWQDDLKYKKPTALPAPQYMNLLMDWIEVQINNEEIFPTCVGVPFPKNFLQICKKILCRLFRVVFVHVYIHHFD
RVIVMGAEA HVNTCYKHFYFVTEMNLIDRKELEPLKEMTSRMCH.



AibGenesis™

is an advanced AI-driven platform designed to create novel antibody sequences with unprecedented speed and precision. By integrating deep learning, structure prediction, and comprehensive immunological datasets, **AibGenesis™** intelligently designs antibodies optimized for affinity, stability, and developability. The platform generates antibody products that support basic scientific research, drug development, and diagnostic applications.